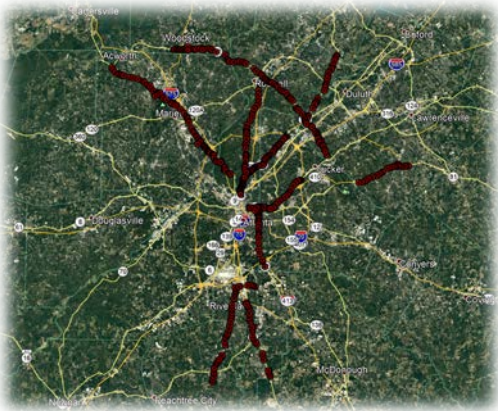




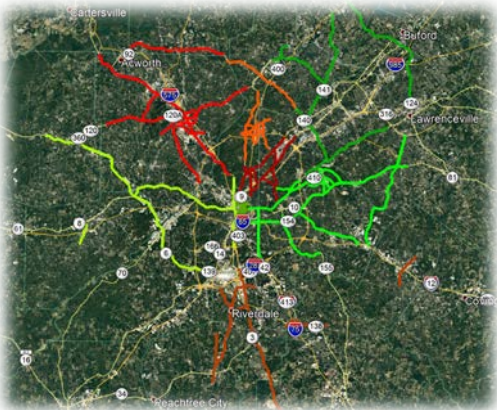
*“GDOT’s SigOps Traffic Signal Operations Program...Growth and Success through Collaboration and Innovation”*

# A Decade of Active Management Signal Operations in Georgia:

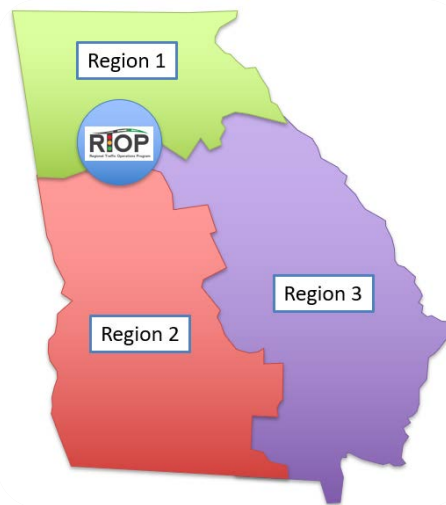
**2011**



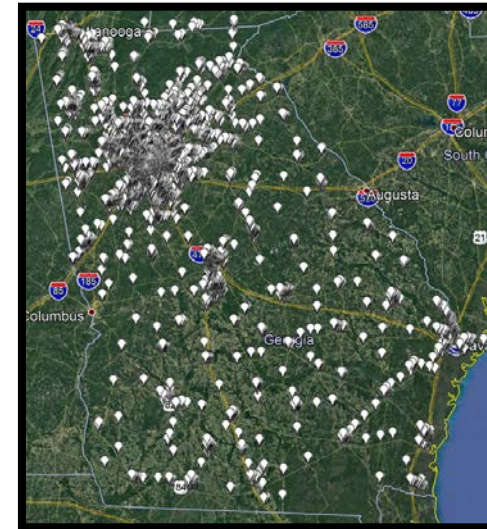
**2015**



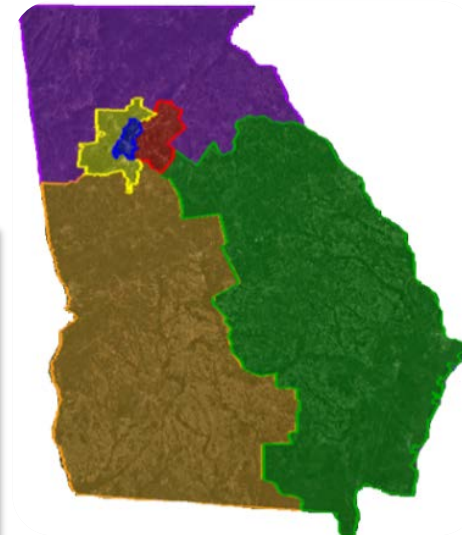
**2017**



**2019**



**2021**



**Scale:**

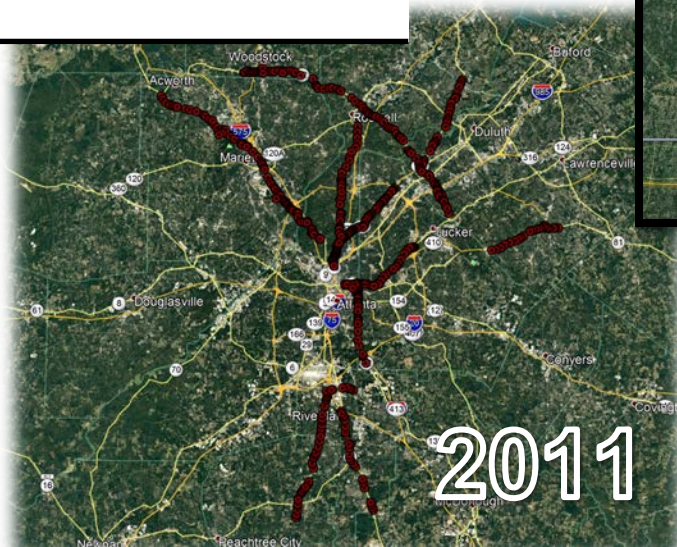
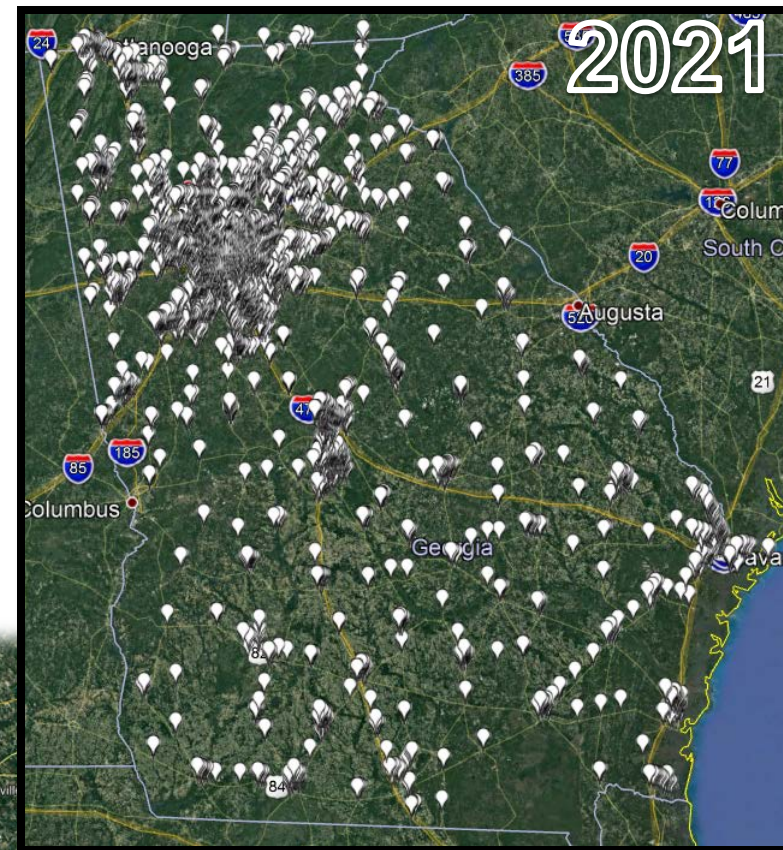
2011 **→** 2021

Actively Managed Intersections      396      8000+

Consultant Teams under Contract      1      8

Dedicated Funding      \$8 million      \$30 million

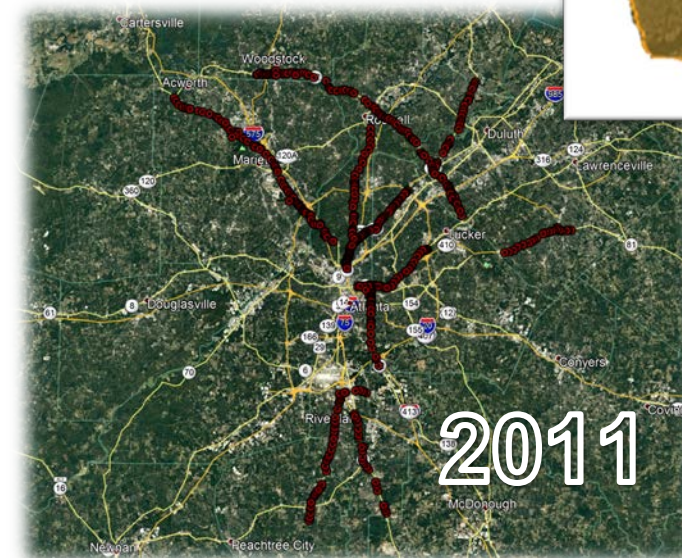
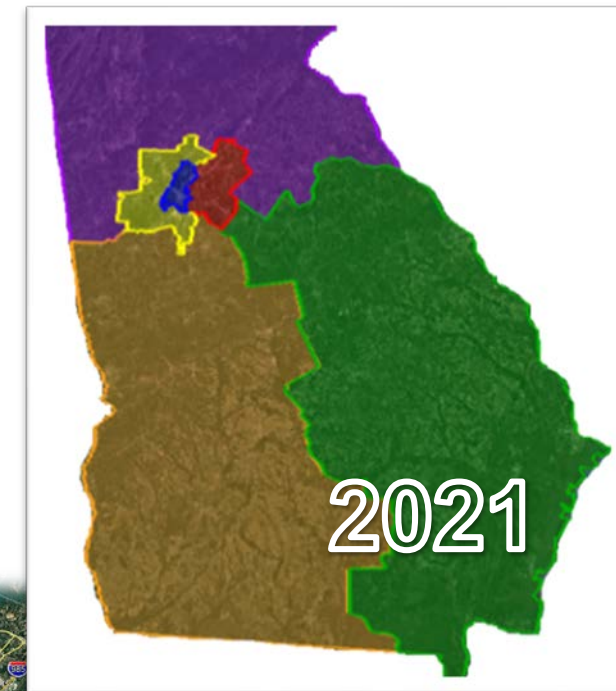
Boundaries      Metro Atlanta      Statewide



# Approach/Vision:

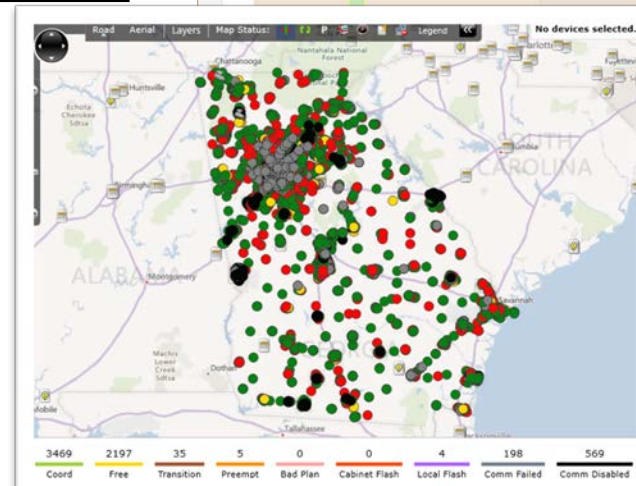
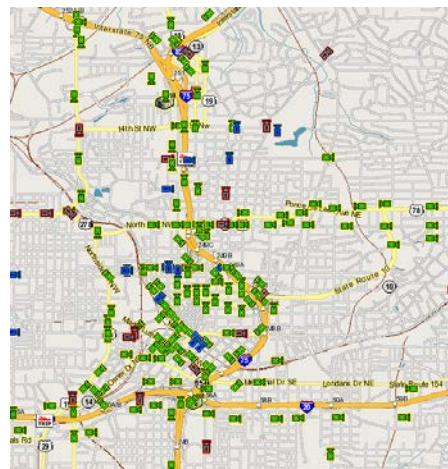
2010 **→** 2021

Model	Corridor Based	Region Based
Priority/Mission Statement	Increase travel throughput	Proactive management
Monitoring	Field	Central & Remote

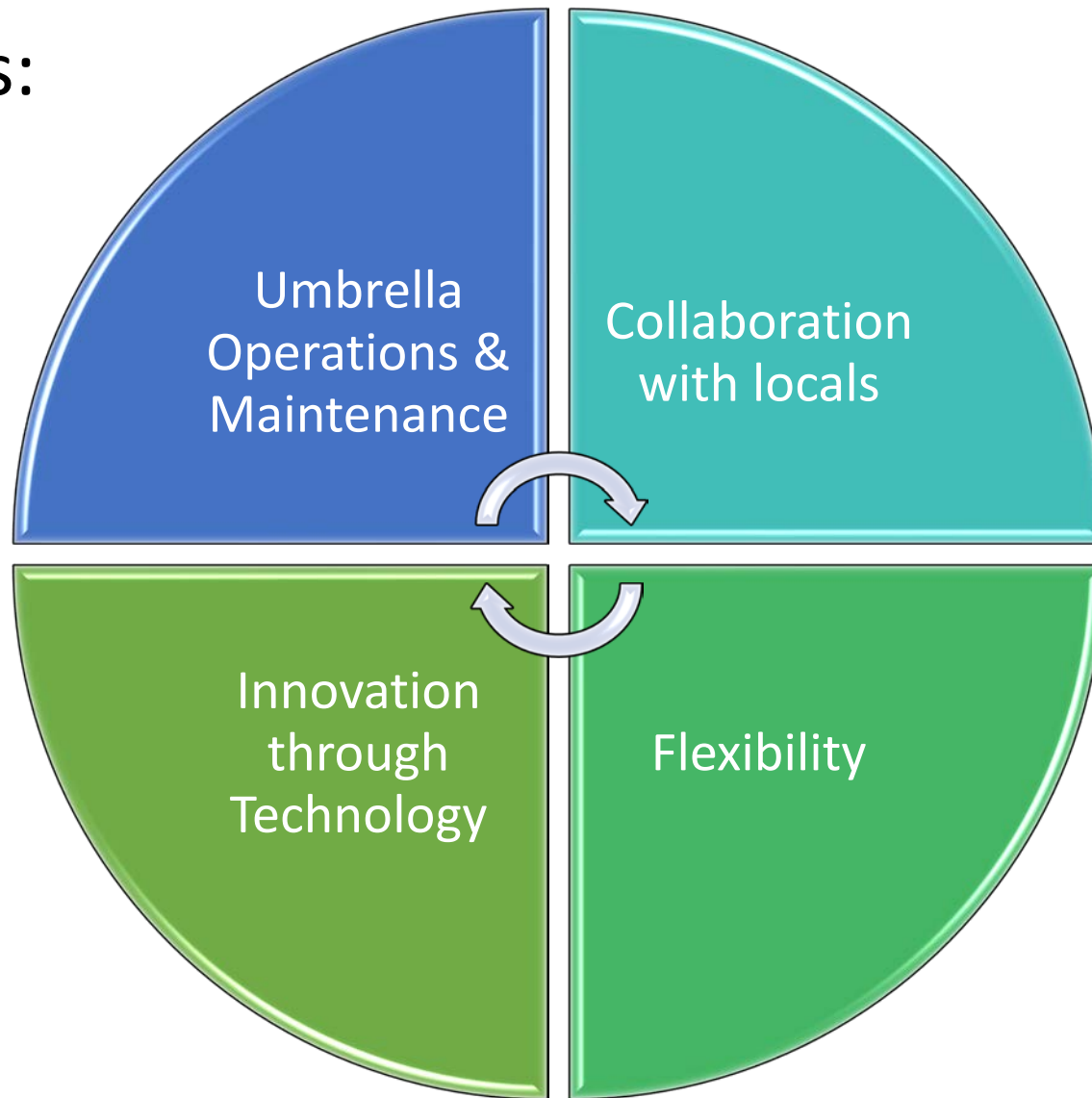


# Technology

	2010	2021
Communication to Central Server	0	6700
Arterial Traffic Monitoring Cameras	0	1000+
High Resolution Controller Data	0	7000+
Performance Metrics	Travel Runs	ATSPM

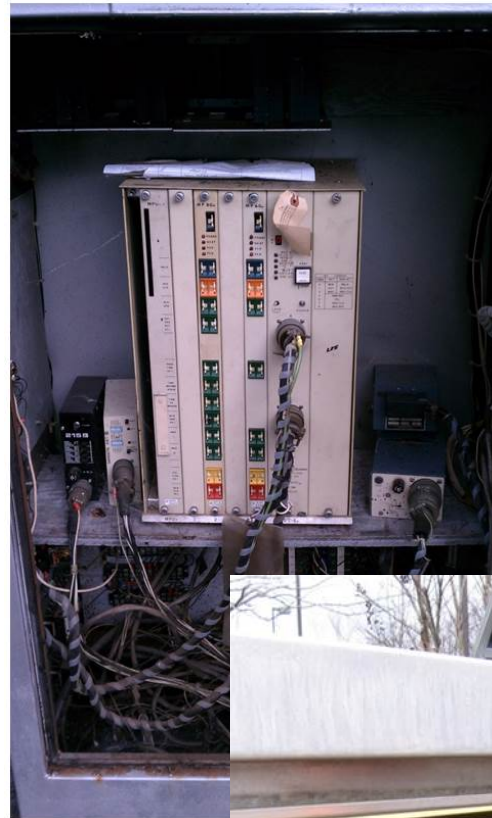


## Keys to Success:



## Robust Maintenance Program:

- Menu of Services Contract
- On-Call Requests (OCR)
- Quick Response OCRs
- Partnering with Locals
- Dedicated Maintenance Staff
- Specialty Skill Sets Developed



## Collaboration is key:

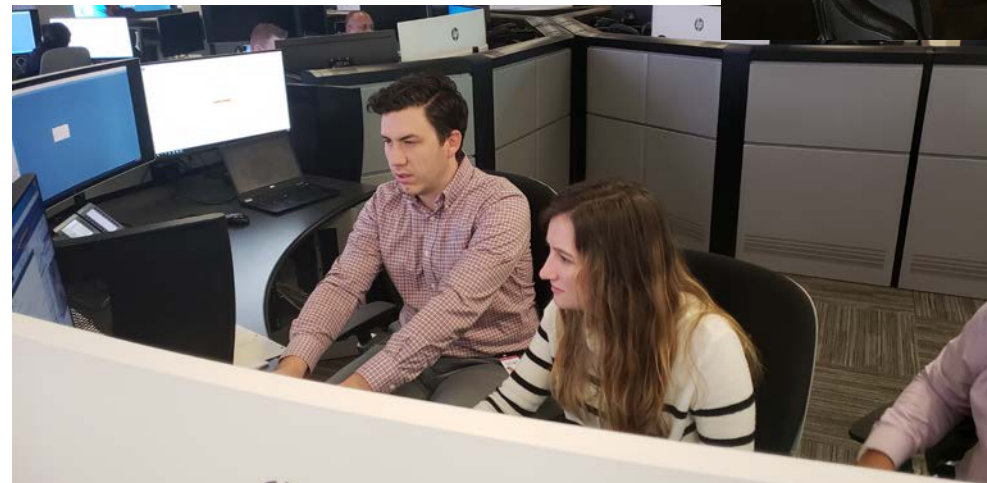
- Partnerships with locals
- Local MOUs....building the trust
- Leveraging maintenance money
- Working together during event and emergency management
- Coordination with construction offices
- Coordination between all SigOps contracts
- Coordination between other GDOT programs





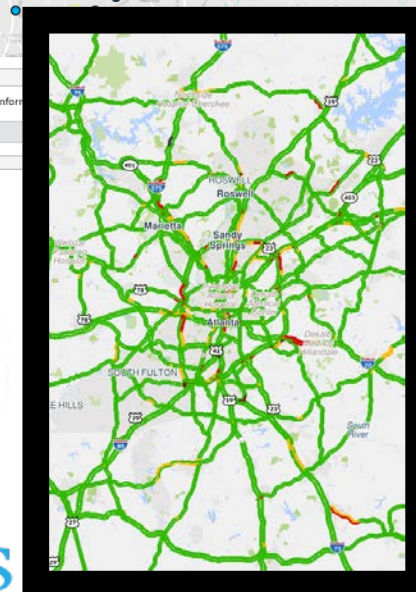
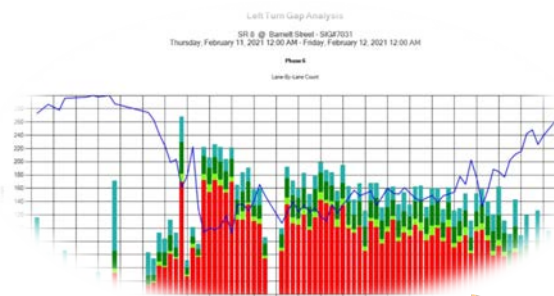
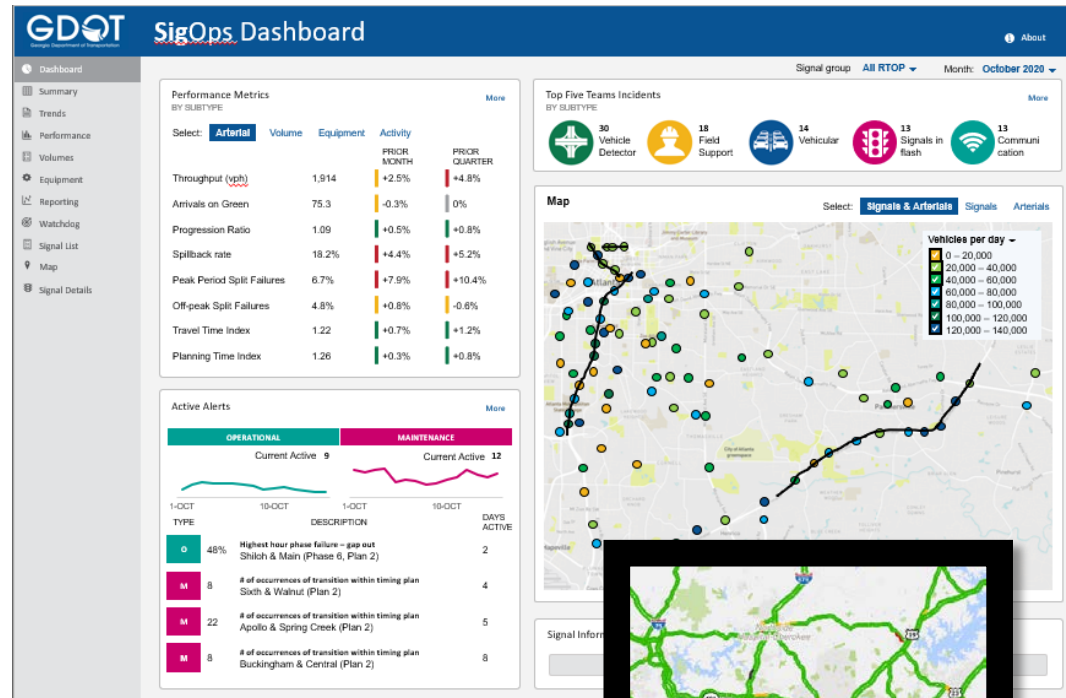
## Allow for Flexibility:

- Contract
- Program
- Local Jurisdictions
- Consultant team structure
- Internal GDOT staff organization



# Innovation leads to Innovation:

- Dashboard to manage big data: SigOps Metrics
- Utilizing additional data sources
- Evaluation of data sources to develop new specific metrics
- Utilizing new metrics to predict issues and better utilize staff and funds
- Development of advanced skill sets in the workforce both in public and private sectors



## Workforce Development

- Training
- Knowledge Sharing
- Collaboration

